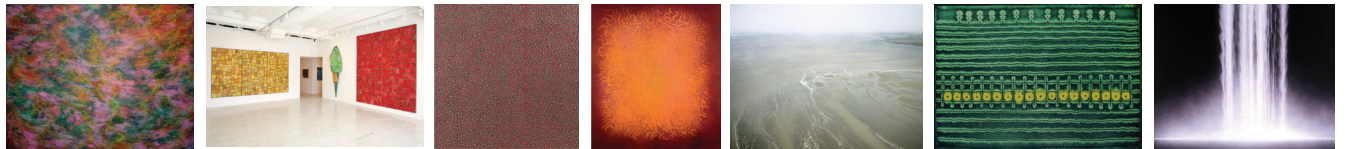


FOR IMMEDIATE RELEASE

SUNDARAM TAGORE GALLERY IN NEW YORK IS PLEASED TO PRESENT *IN YOUR MIND'S EYE: An Asian Group Show That Highlights Artists With Deep Roots in the East*

July 24 - August 31, 2008



(l-r) Ho Sook Kang, Nathan Slate Joseph, Anil Revri, Natvar Bhavsar, Subhankar Banerjee, Sohan Qadri, Hiroshi Senju

New York, New York, July 1, 2008 – SUNDARAM TAGORE GALLERY is pleased to present works by its Asian artists in an exhibition entitled: *In Your Mind's Eye*. The exhibition opens with a cocktail reception on Thursday, July 24, from 6:30 to 8:30 p.m. and runs through August 31. The show includes works from seven of the gallery's most influential Asian artists.

Gallerist Sundaram Tagore said, "We are excited to present works that are very unique – they are from our Asian artists, representing Korea, Japan, India, and Uzbekistan. Seen together, they weave a very dynamic dialogue and address issues of east and west."

Tagore added that, "The works have powerful aesthetics but most importantly all the artists have roots deep in eastern culture. The works are compelling because Asia's culture is enormously diverse and influential, particularly at this time in history."

Korean painter Ho Sook Kang uses dense images of flying cranes, referencing redemption, which is a significant theme that runs through Korean and Japanese symbology. Internationally renowned Indian photographer Subhankar Banerjee is known for beautiful works akin to the tradition of Ansel Adams. Banerjee focuses on indigenous cultures that are disappearing and the effects of global climate change. Hiroshi Senju's work referencing water is powerful and evocative. Nathan Slate Joseph's work on galvanized steel references materials found in urban centers in Asia.

The exhibition is especially exciting, as the gallery just launched its third location in Hong Kong in May, and thus has a special resonance. "To exhibit the work of artists of Asian origins is exciting because that region is producing some of the most interesting work right now. Artists with roots there are a part of a special time in the contemporary art scene right now."

(continued on reverse)

new york 547 WEST 27TH STREET, NEW YORK, NEW YORK 10001

beverly hills 9606 SOUTH SANTA MONICA BOULEVARD, BEVERLY HILLS, CALIFORNIA 90210

hong kong 57-59 HOLLYWOOD ROAD, CENTRAL, HONG KONG

WWW.SUNDARAMTAGORE.COM

A complete list of the artists includes: Subhankar Banerjee, Natvar Bhavsar, Nathan Slate Joseph, Ho Sook Kang, Sohan Qadri, Anil Revri, and Hiroshi Senju.

For more information or to schedule interviews with the artists, please contact press director Anna Shen at anna@sundaramtagore.com or by cell phone at 1 917 907 0035.

###

Sundaram Tagore Gallery

NEW YORK
547 West 27th Street
New York, NY 10001
t: 212 677 4520
f: 212 677 4521
gallery@sundaramtagore.com

BEVERLY HILLS
9606 South Santa Monica Boulevard
Beverly Hills, CA 90210
t: 310 278 4520
f: 310 278 4525
beverlyhills@sundaramtagore.com

HONG KONG
57-59 Hollywood Road
Central, Hong Kong
t: 852 2581 9678
f: 852 2581 9673
hongkong@sundaramtagore.com