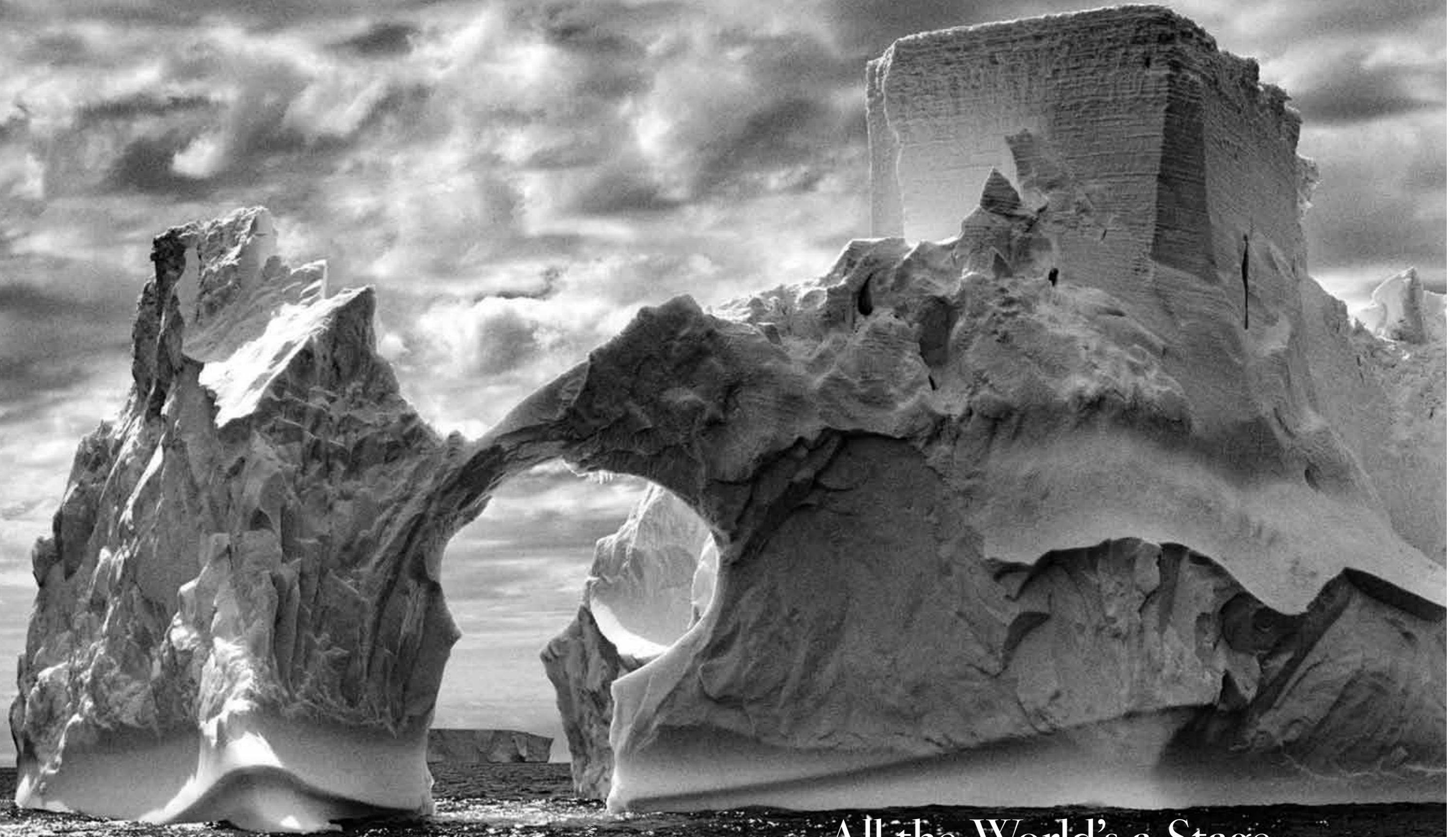
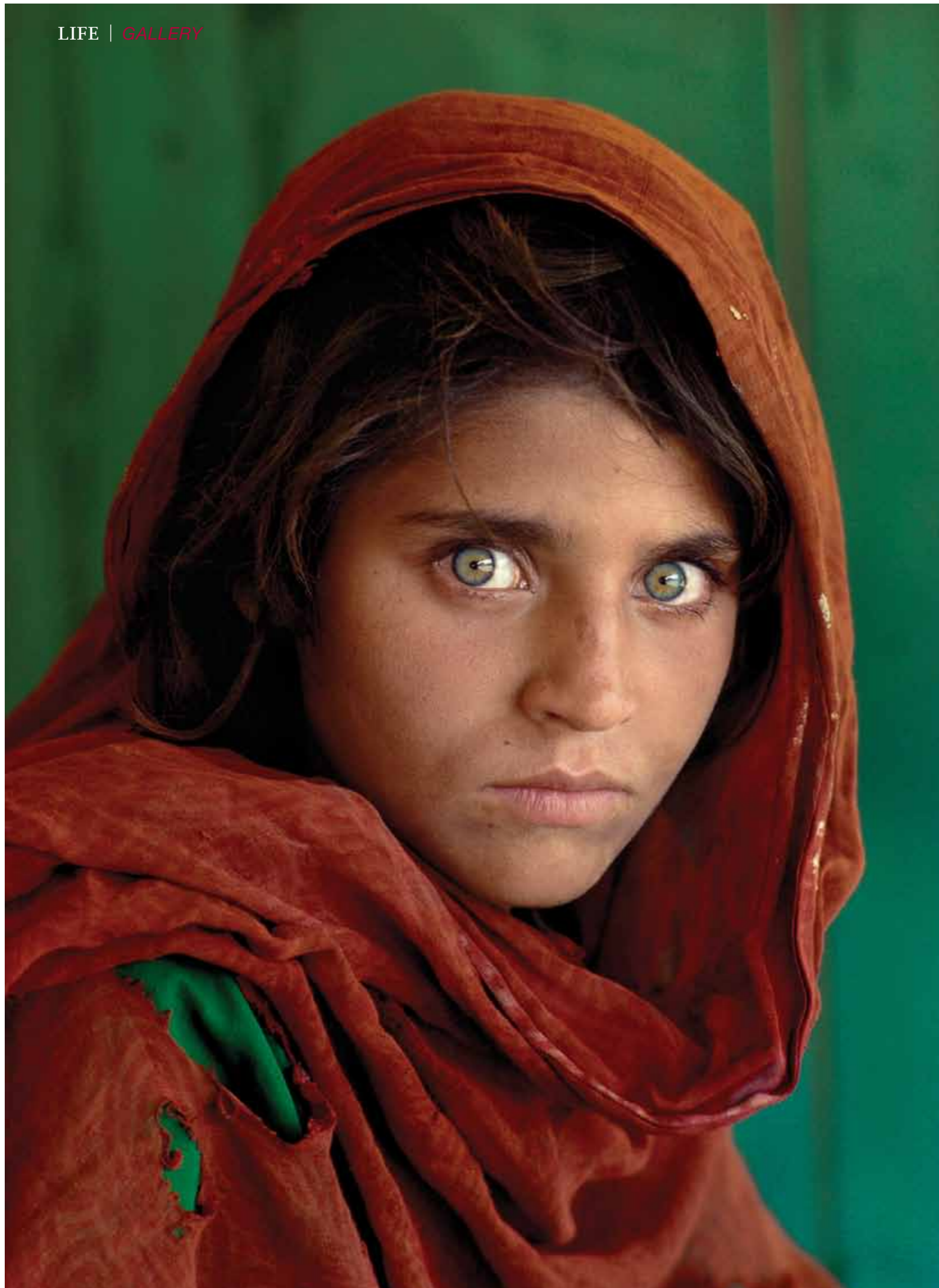


**ICE
CASTLES**
Sebastião
Salgado,
*Iceberg
between
Paulet
Island and
the South
Shetland
Islands in the
Weddell Sea,
Antarctic
Peninsula,*
2005



All the World's a Stage

Five iconic photographers will exhibit their most memorable works at the Ayala Museum this month



HAUNTING IMAGES
Robert Polidori, *Alvares Residence, Bedroom #2, Margao, Goa, India*, 1998; (opposite) Steve McCurry, *Sharbat Gula, the Afghan Girl, at Nasir Bagh refugee camp near Peshawar, Pakistan*, 1984

“**I** KEEP TAKING PHOTOGRAPHS probably for the same reason I keep breathing, eating, and sleeping,” says Steve McCurry. “This is just what I do.”

Judging from the images on view in the Ayala Museum group exhibition *The World We Live In: Through the Lens of Contemporary Photography* (17 February-27 March 2016), he isn't the only one. Each of the exhibiting artists share a similar obsession with the medium. Devoting their lives to documenting the world around us, they have captured myriad geographies and cultures with arresting results.

The museum exhibition, hosted in partnership with Sundaram Tagore Gallery and Teresa Herrera of Collective 88, features images from the distant travels of the five photographers as part of Art Fair Philippines. The selected works

weave a rich visual narrative of pertinent issues in contemporary culture.

Brazilian photographer Sebastião Salgado has built his name with sublime black-and-white photographs of vanishing cultures, wild animals and migrant populations in flux, particularly the celebrated *Serra Pelada* and *Genesis* series. In contrast, Edward Burtynsky is known for his disturbingly beautiful photographs of ravaged landscapes. The remaining two photographers, Annie Leibovitz and Robert Polidori, turn away from the natural world and hone in on human behaviour and how we interact with our surroundings.

The common thread linking the images in the show is a deep sense of empathy. As McCurry says, “We are all fascinated with each other and how we live in different ways. If we see how other people live, we see our similarities and our shared humanity.”

The World We Live In: Through the Lens of Contemporary Photography

Exhibition Dates: February 17 to March 27, 2016

Venue: Ayala Museum, Makati Avenue, De La Rosa Street, Greenbelt Park, Metro Manila Philippines

For more information, please visit <http://www.ayalamuseum.org> or <http://www.sundaramtagore.com>



**MASTER
PIECES**
(From top)
Robert Polidori,
AMI.04.001,
Attique du
Midi, Aile du
Midi-Attique,
Château de
Versailles,
France, 2005;
Sebastião
Salgado,
Southern Right
Whale, Valdés
Peninsula,
Argentina, 2004



**IMITATION
OF LIFE**
(From top)
Sebastião
Salgado,
Group portrait
of Kamayura
Shamans,
Upper Xingu,
Mato Grosso,
Brazil,
2005; Steve
McCurry,
Reflection of
the Taj Mahal,
Agra, Uttar
Pradesh,
India, 1999